





Data Privacy Guarantee



Real-Time Order Tracking



Multi-Platform Access



Seamless Order Management



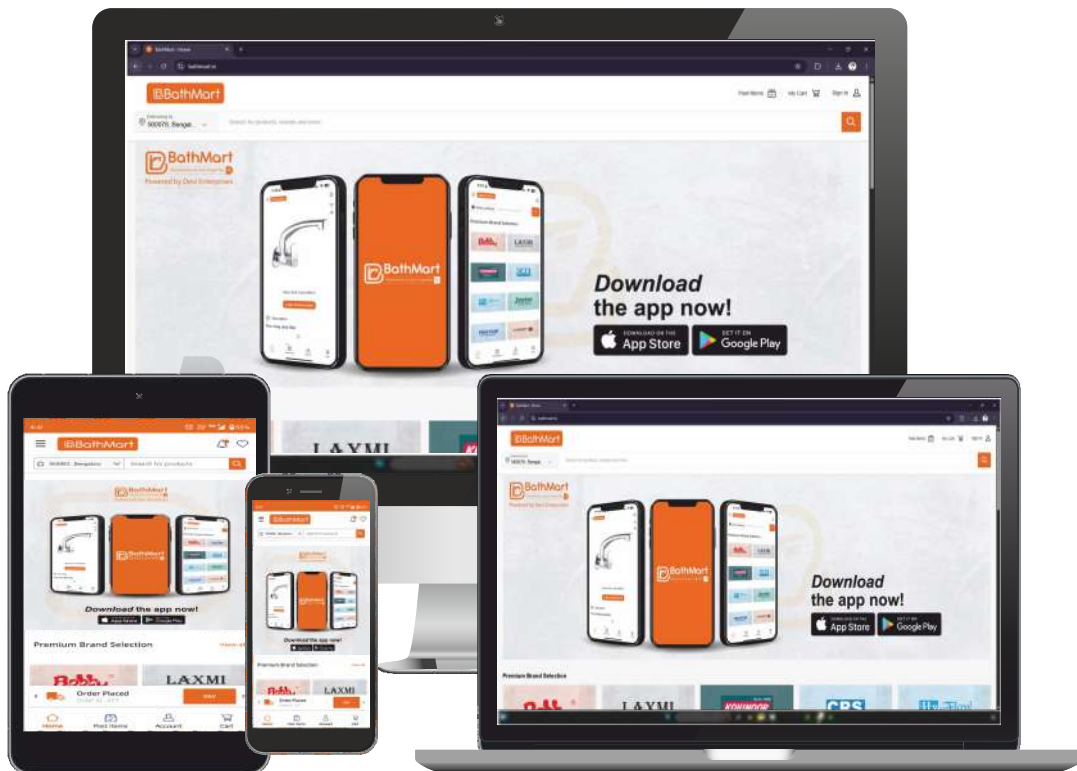
User-Friendly Interface



Automated Inventory Management



# OUR APPLICATION



**Get The Bathmart App**

**Fast. Reliable. For Dealers.**

**Scan & Download**



# About BathMart

BathMart is a state-of-the-art digital platform set to revolutionize how businesses manage B2B operations. Launching in 2025, our all-in-one solution simplifies every step of the B2B process—from order placement and tracking to payments and inventory management. Accessible on desktop, iOS, and Android, BathMart brings automation, transparency, and efficiency to businesses of every size, enabling them to focus on growth, not paperwork. Our vision is simple: to empower businesses with technology that makes B2B easy, fast, and reliable.

## Our Values

- Innovation** : We harness technology to solve real-world business challenges
- Efficiency** : We streamline processes to save time and reduce errors.
- Transparency** : We provide clear, real-time information to all stakeholders.

## Our Commitment

We're committed to helping businesses unlock their full potential by delivering a comprehensive platform that transforms traditional B2B operations into streamlined, modern workflows.



## Brand Index



**Junior**<sup>®</sup>  
quality bathing

06 - 15



**LAXMI**  
THE MIRABLE BATH FITTINGS

16 - 17



**EVERWIN**<sup>®</sup>  
Exclusive Bathroom Accessories

18 - 22



**waterscience**<sup>™</sup>

23 - 26



Since 1960  
**KOHINDOR**  
**KORUM**  
Bath Faucets

27 - 29



**POLO FLEX**<sup>®</sup>  
BATH ACCESSORIES

30 - 31



**Hy-Flow**<sup>®</sup>  
art that performs

32



**Bobby**<sup>®</sup>

33



**SKI**<sup>®</sup>  
T.M. No. 465219  
Since 1977

33



**Std Pkg** **JF500**  
01 Angle Cock



**Std Pkg** **JF501**  
01 Bib Cock



**Std Pkg** **JF502**  
01 Long Body



**Std Pkg** **JF503**  
01 Pillar cock



**Std Pkg** **JF506**  
01 Sink Cock



**Std Pkg** **JF507**  
01 Swan Neck



**Std Pkg** **JF505**  
01 2-In-1 Angle Cock



**Std Pkg** **JF504**  
01 2-In-1 Bib Cock



**Std Pkg** **JF508**  
01 Sink Mixer



**Std Pkg** **JF509**  
01 Center Hole Basin Mixer



**Std Pkg** **JF510**  
01 2-In-1 Wall Mixer With L Bend



**Std Pkg** **JF511**  
01 3-In-1 Wall Mixer With L Bend



**Std Pkg** **JS500**  
01 Angle Cock



**Std Pkg** **JS501**  
01 Bib Cock



**Std Pkg** **JS502**  
01 Long Body



**Std Pkg** **JS503**  
02 Pillar Cock



**Std Pkg** **JS505**  
01 2-In-1 Angle Cock



**Std Pkg** **JS504**  
01 2-In-1 Bib Cock



**Std Pkg** **JS507**  
01 Swan Neck



**Std Pkg** **JS506**  
01 Sink Cock



**Std Pkg** **JS508**  
01 2-In-1 Wall Mixer With L Bend



**Std Pkg** **JO600**  
01 Angle Cock



**Std Pkg** **JO601**  
01 Bib Cock



**Std Pkg** **JO602**  
01 Long Body



**Std Pkg** **JO603**  
02 Pillar Cock



**Std Pkg** **JO607**  
01 Sink Cock



**Std Pkg** **JO609**  
01 Swan Neck



**Std Pkg** **JO606**  
01 2-In-1 Angle Cock



**Std Pkg** **JO605**  
01 2-In-1 Bib Cock



**Std Pkg** **JO608**  
01 2-In-1 Wall Mixer With L Bend



**Std Pkg** **JMF700**  
01 Angle Cock



**Std Pkg** **JMF701**  
02 Bib Cock



**Std Pkg** **JMF702**  
02 Long Body



**Std Pkg** **JMF703**  
02 Pillar Cock



**Std Pkg** **JMF706**  
01 Sink Cock



**Std Pkg** **JMF707**  
01 Swan Neck



**Std Pkg** **JMF705**  
01 2-In-1 Angle Cock



**Std Pkg** **JMF704**  
01 2-In-1 Bib Cock



**Std Pkg** **JMF711**  
01 Sink Mixer



**Std Pkg** **JMF708**  
01 2-In-1 Wall Mixer With L Bend



**Std Pkg** **JP400**  
02 Angle Cock



**Std Pkg** **JP401**  
02 Bib Cock



**Std Pkg** **JP402**  
02 Long Body



**Std Pkg** **JP403**  
02 Pillar Cock



**Std Pkg** **JP408**  
02 Sink Cock



**Std Pkg** **JP409**  
02 Swan Neck



**Std Pkg** **JP407**  
01 2-In-1 Angle Cock



**Std Pkg** **JP406**  
01 2-In-1 Bib Cock



**Std Pkg** **JP404**  
02 Washing Machine Tap



**Std Pkg** **JP405**  
02 Nozzle Bib Cock



**Std Pkg** **JP410**  
01 2-In-1 Wall Mixer With L Bend





**Std Pkg** **JC100**  
02 Angle Cock



**Std Pkg** **JC101**  
02 Bib Cock



**Std Pkg** **JC102**  
02 Long Body



**Std Pkg** **JC104**  
02 Pillar Cock



**Std Pkg** **JC105**  
01 Sink Cock



**Std Pkg** **JC106**  
01 Swan Neck



**Std Pkg** **JC107**  
01 2-In-1 Angle Cock



**Std Pkg** **JC108**  
01 2-In-1 Bib Cock



**Std Pkg** **JC113**  
01 Sink Mixer



**Std Pkg** **JC109**  
01 2-In-1 Wall Mixer With L Bend



**Std Pkg** **JC103**  
02 Long Body Long Nose



**Std Pkg** **JC110**  
01 Center Hole Basin Mixer



**Std Pkg** **JD200**  
04 Angle Cock



**Std Pkg** **JD201**  
02 Bib Cock



**Std Pkg** **JD202**  
02 Long Body



**Std Pkg** **JD203**  
02 Pillar Cock



**Std Pkg** **JD208**  
02 Sink Cock



**Std Pkg** **JD209**  
02 Swan Neck



**Std Pkg** **JD207**  
01 2-In-1 Angle Cock



**Std Pkg** **JD206**  
01 2-In-1 Bib Cock



**Std Pkg** **JD212**  
02 Pillar Cock High Neck



**Std Pkg** **JD205**  
02 Nozzle Bib Cock



**Std Pkg** **JD204**  
02 Washing Machine Tap



**Std Pkg** **JD210**  
01 2-In-1 Wall Mixer With L Bend



**Std Pkg** **JV300**  
04 Angle Cock



**Std Pkg** **JV301**  
02 Bib Cock



**Std Pkg** **JV302**  
02 Long Body



**Std Pkg** **JV303**  
02 Pillar Cock



**Std Pkg** **JV309**  
02 Swan Neck



**Std Pkg** **JV308**  
02 Sink Cock



**Std Pkg** **JV304**  
02 Washing Mashine Tap



**Std Pkg** **JV306**  
01 2-In-1 Bib Cock



**Std Pkg** **JV307**  
01 2-In-1 Angle Cock



**Std Pkg** **JV305**  
02 Nozzle Bib Cock



**Std Pkg** **JV311**  
02 Pillar Cock High Neck



**Std Pkg** **JV310**  
01 2-In-1 Wall Mixer With L Bend



Std Pkg **JCH02**  
02 Heavy Long Body



Std Pkg **JCH01**  
02 Heavy Bib Cock



Std Pkg **JCH03**  
02 Heavy Pillar Cock



Std Pkg **JCRM04**  
01 Pillar Cock



Std Pkg **JCRM02**  
02 Bib Cock



Std Pkg **JCRM03**  
01 Long Body



Std Pkg **JOP814**  
01 Sink Cock



Std Pkg **JOP815**  
01 Swan Neck



**Std Pkg** **JOP806**  
01 Sink Cock Long Spout



**Std Pkg** **JOP807**  
01 Swan Neck Long Spout







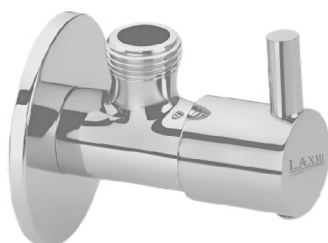
**Std Pkg** **102501**  
36 EZPack 1/2" Light Disc



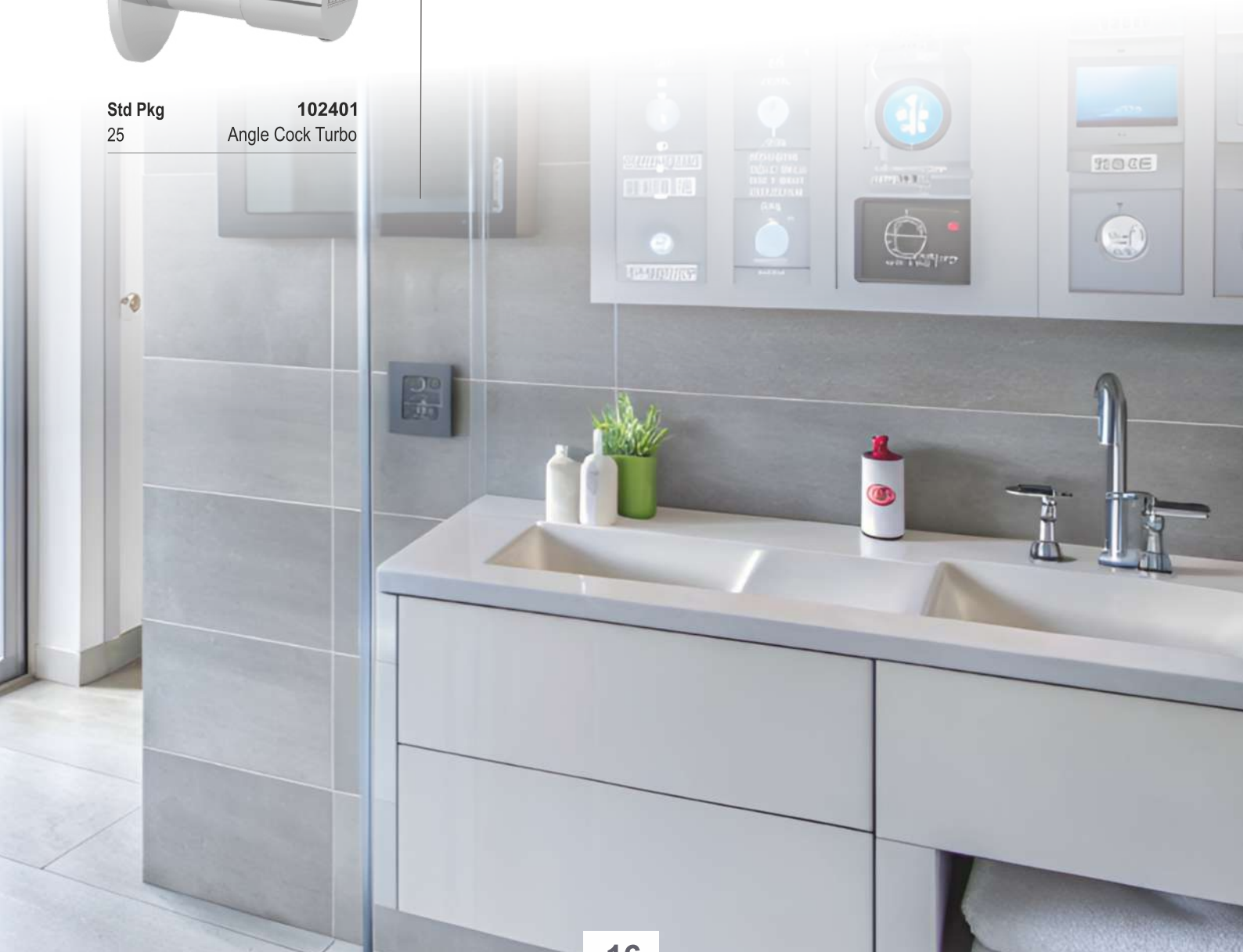
**Std Pkg** **102502**  
36 EZPack 1/2" Heavy Disc



**Std Pkg** **102503**  
18 EZPack 3/4" Heavy Disc



**Std Pkg** **102401**  
25 Angle Cock Turbo







**Std Pkg** **102308**  
05 Angle Cock



**Std Pkg** **102309**  
04 Bib Cock



**Std Pkg** **102310**  
04 Long Body



**Std Pkg** **102311**  
03 Pillar Cock



**Std Pkg** **102314**  
02 Sink Cock



**Std Pkg** **102315**  
02 Swan Neck



**Std Pkg** **102312**  
02 2-In-1 Bib Cock

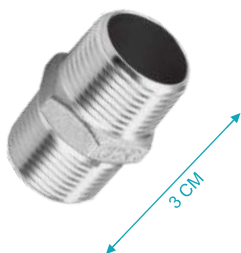


**Std Pkg** **102313**  
02 2-In-1 Angle Cock



Stainless Steel Extension Nipple

Code	Size	Std Pkg
102303	1"	72
102304	1.5"	36
102305	2"	24
102306	3"	16



**Std Pkg** **102301**  
50 Stainless Steel Hex Nipple Deluxe



**Std Pkg** **102302**  
40 Stainless Steel Hex Nipple Super



**Std Pkg** **102307**  
36 Stainless Steel Hex Nipple Premium



**Std Pkg** **DR501**  
01 Soap Dish



**Std Pkg** **DR502**  
01 Tumbler Holder



**Std Pkg** **DR503**  
01 Napkin Ring



**Std Pkg** **DR511**  
01 Tumbler Holder with Soap Dish



**Std Pkg** **DR509**  
01 Liquid Dispenser



**Std Pkg** **DR508**  
01 Paper Holder



**Std Pkg** **DR512**  
01 3 in 1



**Std Pkg** **DR510**  
01 Soap Dish Double



**Std Pkg** **DR504**  
01 Towel Rod



**Std Pkg** **DR506**  
01 Towel Rack



**Std Pkg** **GE801**  
01 Soap Dish



**Std Pkg** **GE802**  
01 Tumbler Holder



**Std Pkg** **GE803**  
01 Napkin Ring



**Std Pkg** **GE811**  
01 Tumbler Holder with Soap Dish



**Std Pkg** **GE809**  
01 Liquid Dispenser



**Std Pkg** **GE808**  
01 Paper Holder



**Std Pkg** **GE810**  
01 Soap Dish Double



**Std Pkg** **GE804**  
01 Towel Rod



**Std Pkg** **GE806**  
01 Towel Rack



**Std Pkg** **LE901**  
01 Soap Dish



**Std Pkg** **LE902**  
01 Tumbler Holder



**Std Pkg** **LE910**  
01 Soap Dish Double



**Std Pkg** **LE911**  
01 Tumbler Holder with Soap Dish



**Std Pkg** **LE909**  
01 Liquid Dispenser



**Std Pkg** **LE903**  
01 Napkin Ring



**Std Pkg** **LE904**  
01 Towel Rod



**Std Pkg** **LE908**  
01 Paper Holder



**Std Pkg** **LE906**  
01 Towel Rack



**Std Pkg** **JU401**  
01 Soap Dish



**Std Pkg** **JU402**  
01 Tumbler Holder



**Std Pkg** **JU403**  
01 Napking Ring



**Std Pkg** **JU411**  
01 Tumbler Holder with Soap Dish



**Std Pkg** **JU409**  
01 Liquid Dispenser



**Std Pkg** **JU408**  
01 Paper Holder



**Std Pkg** **JU412**  
01 3 in 1



**Std Pkg** **JU410**  
01 Soap Dish Double



**Std Pkg** **JU404**  
01 Towel Rod



**Std Pkg** **JU406**  
01 Towel Rack



**Std Pkg** **TA701**  
01 Soap Dish



**Std Pkg** **TA702**  
01 Tumbler Holder



**Std Pkg** **TA703**  
01 Napkin Ring



**Std Pkg** **TA711**  
01 Tumbler Holder with Soap Dish



**Std Pkg** **TA709**  
01 Liquid Dispenser



**Std Pkg** **TA708**  
01 Paper Holder



**Std Pkg** **TA712**  
01 3 in 1



**Std Pkg** **TA710**  
01 Soap Dish Double



**Std Pkg** **TA704**  
01 Towel Rod



**Std Pkg** **TA714**  
01 Folding Towel Rack



**Std Pkg** **TA706**  
01 Towel Rack





*Fits all taps*

**CLEO-SFU-717**  
Shower & Tap Filter



*Fits all taps*

**CLEO-SFU-423-H**  
Shower & Tap Filter



*Shower-head included*

**CLEO-SFS-423**  
Shower Filter



*Shower-head included*

**CLEO-SFM-419**  
Shower Filter Multi Flow



*Shower-head included*

**CLEO-SFM-524**  
Shower Filter Multi Flow



*Shower-head included*

Chrome

**CLEO-SFR-923-C**  
Shower Filter Without Arm



*Shower-head included*

Matte Black

**CLEO-SFR-923-B**  
Shower Filter With Arm



**SFC-UW-100-H**  
Shower & Tap Filter Cartridge

**Note : All Showers & Tap Filters Included With High-Hardness Cartridge (HHC)**



**AERA-WSN-523-M**  
Aera-Mini



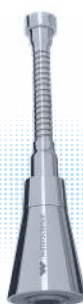
**AERA-WSN-523-C**  
Aera-Compact



**AERA-WSN-523-W**  
Aera-Wide



**AERA-WSN-823-L**  
Aera-Flexo



**AERA-WSN-1023-C**  
Aera-Duel Flow Cone

*Note : Fits in All (22/24mm) Taps*



**MIZU-UTF-1122**  
Universal Tap Filter

Pack of 6



**MIZU-RC-100**  
Universal Tap Filter Cartridge



**FLO-KTF-623**  
Kitchen Tap Filter Mini



**RIO MLF-J10" Single Stage 1**  
Main-line Filter Jumbo



**RIO-MLF-J10"- Stage 2**  
Main-line Filter Jumbo



**RIO-MLC-10**  
Jumbo Main Line Filter Cartridge



**RIO MLF-J20" Single Stage 1**  
Main-line Filter Jumbo



**RIO-MLF-J20"- Stage 2**  
Main-line Filter Jumbo



**RIO-MLC-20**  
Jumbo Main Line Filter Cartridge



**IRIS WMF 325**  
Washing Machine Filter



**IRIS WMF-621**  
Washing Machine Filter



500ml **DGM-523**

Descaler Spray Tiles Glass & Mirrors



500ml **DGS-523**

Descaler Spray Tap & Shower



300ml



300ml

**DGM-822 DTS-822**

Descaler Spray Tap BOGO 1+1



**WMD-622**

Washing Machine Descaler Tablets



**DMD-622**

Dishwasher Descaler Tablets



**PURO-HFF-623-D**

Health Faucet Gun With Filter

Chrome



**PURO-HFE-224**

Health Faucet Full Set

Chrome



**PURO-HFE-224**

Health Faucet Only Gun



Connection Pipe Nylon Grip

Code	Size	Std Pkg
KRM01	18"	20
KRM02	24"	20
KRM03	36"	15
KRM04	48"	10
KRM05	60"	10
KRM06	72"	08
KRM08	84"	05
KRM09	96"	05



Ball Cock With Rod

Code	Size in mm	Size	Std Pkg
KRM18	15MM	1/2"	02
KRM19	20MM	3/4"	02
KRM20	25MM	1"	02
KRM21	32MM	1.1/4"	01
KRM22	40MM	1.1/2"	01
KRM23	50MM	2"	01



NRV Vertical

Code	Size in mm	Size	Std Pkg
KRM40	20MM	3/4"	01
KRM41	25MM	1"	01
KRM42	32MM	1.1/4"	01
KRM43	40MM	1.1/2"	01
KRM44	50MM	2"	01



Connection Pipe Steel Grip

Code	Size	Std Pkg
KRM10	18"	20
KRM11	24"	20
KRM12	36"	15
KRM13	48"	10
KRM14	60"	10
KRM15	72"	08
KRM16	84"	05
KRM17	96"	05



Handle Ball Valve

Code	Size in mm	Size	Std Pkg
KRM27	15MM	1/2"	02
KRM28	20MM	3/4"	02
KRM29	25MM	1"	02
KRM30	32MM	1.1/4"	02
KRM31	40MM	1.1/2"	02
KRM32	50MM	2"	02



NRV Horizontal

Code	Size in mm	Size	Std Pkg
KRM45	20MM	3/4"	01
KRM46	25MM	1"	01
KRM47	32MM	1.1/4"	01
KRM48	40MM	1.1/2"	01
KRM49	50MM	2"	01



CP Extension Nipple

Code	Size	Std Pkg
KRM60	1"	36
KRM61	1.1/2"	24
KRM62	2"	18



KRM83



KRM84



KRM85

Stainless Steel Angle Cock

Code	Model	Std Pkg
KRM83	Fusion	20
KRM84	Triangular	20
KRM85	Turbo	20



PVC Jali Foot Valve

Code	Size in mm	Size	Std Pkg
KRM34	25MM	1"	01
KRM35	32MM	1.1/4"	01
KRM36	40MM	1.1/2"	01
KRM37	50MM	2"	01



Brass Swing Check Valve NRV

Code	Size in mm	Size	Std Pkg
KRM97	15MM	1/2"	01
KRM98	20MM	3/4"	01
KRM99	25MM	1"	01
KRM100	32MM	1.1/4"	01
KRM101	40MM	1.1/2"	01
KRM102	50MM	2"	01



Std Pkg **KRM63**  
 15 1/2" CP Elbow



Std Pkg **KRM64**  
 12 1/2" CP Tee



Std Pkg **KRM52**  
 01 Sink Coupling



Std Pkg **KRM65**  
 50 SS CP Flange Jaq Type



Std Pkg **KRM72**  
 01 Push Cock



Std Pkg **KRM71**  
 01 Urinal Push Cock



Std Pkg **KRM73**  
 01 Push Cock Twisted



Std Pkg **KRM75**  
 01 Urinal Spreader Regular



Std Pkg **KRM76**  
 01 Urinal Spreader Sleek



Std Pkg **KRM74**  
 01 Urinal Spreader Parry



Std Pkg **KRM59**  
 30 CP Hex Nipple



Stainless Steel Locking Jali Round

Code	Model	Std Pkg
<b>KRM69</b>	Plain	20
<b>KRM70</b>	Hole	20





Std Pkg **KRM77**  
 01 Urinal Waste Coupling



Std Pkg **KRM80**  
 10 Health Faucet Acro



Std Pkg **KRM57**  
 01 Project Wall Hung Rack Bolt (5/8-16MM)



Std Pkg **KRM58**  
 01 SS Wall Hung Rack Bolt (5/8-16MM)



Std Pkg **KRM56**  
 01 Wash Basin Rack Bolt (3/8)



Std Pkg **KRM78**  
 10 Urinal Waste Pipe



Pvc Ball For Ball Cock

Code	Size	Std Pkg
<b>KRM24</b>	4"	01
<b>KRM25</b>	6"	01
<b>KRM26</b>	8"	01



PVC Cup Waste Pipe

Code	Type	Std Pkg
<b>KRM50</b>	Sparc	15
<b>KRM51</b>	Royal	10



Std Pkg **KRM86**  
 100 Teflon Tape 12mm



Std Pkg **KRM53**  
 01 Waste Coupling 3" Full Thread



Std Pkg **KRM55**  
 01 Waste Coupling 5" Full Thread



Std Pkg **KRM54**  
 01 Waste Coupling 3" Half Thread



**Std Pkg** **PF01**  
02 Single Soap Dish Square



**Std Pkg** **PF02**  
02 Single Soap Dish Oval



**Std Pkg** **PF03**  
02 Double Soap Dish Square



**Std Pkg** **PF04**  
02 Double Soap Dish Oval



**Std Pkg** **PF15**  
02 2 In 1



**Std Pkg** **PF16**  
02 3 In 1



**Std Pkg** **PF17**  
02 4 In 1



**Std Pkg** **PF18**  
02 5 In 1



**Std Pkg** **PF10**  
02 14" Multipurpose Shelf



**Std Pkg** **PF11**  
02 16" Multipurpose Shelf



**Std Pkg** **PF12**  
01 14" Front Shelf



**Std Pkg** **PF13**  
01 18" Front Shelf



**Std Pkg** **PF05**  
02 8 X 8 Corner



**Std Pkg** **PF06**  
02 10 X 10 Corner



**Std Pkg** **PF07**  
02 12 X 12 Corner



**Std Pkg** **PF08**  
01. Set Diamond 3Pc Corner Set



**Std Pkg** **PF09**  
01. Set Jumbo 3Pc Corner Set Heavy



**Std Pkg** **PF14**  
01 Set Top Box Stand



**Std Pkg** **HFA04**  
02 Double Soap Dish Oval



**Std Pkg** **HFA03**  
02 Double Soap Dish Square



**Std Pkg** **HFA10**  
02 11" Mini Deluxe Soap Dish



**Std Pkg** **HFA09**  
02 15" Deluxe Soap Dish



**Std Pkg** **HFA06**  
02 18" Front Shelf Oval



**Std Pkg** **HFA05**  
02 12" Front Shelf Oval



**Std Pkg** **HFA07**  
02 12" Front Shelf Dee



**Std Pkg** **HFA08**  
02 18" Front Shelf Dee



**Std Pkg**  
01

**HFA12** **HFA13** **HFA14**  
8x8 10x10 12x12



**Std Pkg** **HFA01**  
02 Single Soap Dish Square



**Std Pkg** **HFA02**  
02 Single Soap Dish Oval



**Std Pkg** **HFA11**  
02 3 In 1 Brush Holder



**Std Pkg** **BFU29**  
20 Angle Cock Fusion

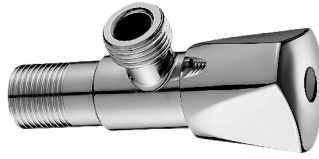


**Std Pkg** **BTT22**  
100 Teflon Tape



Health Faucet Set

Code	Model	Std Pkg
BHF07	Ess-Ess CP	01
BHF08	Ess-Ess	01

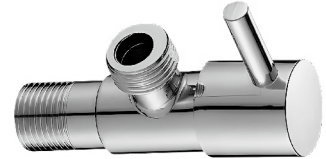


**Std Pkg** **BTR27**  
20 Angle Cock Trigon



Ball Valve Handle Type

Code	Size mm	Size Inch	Std Pkg
BBV01	15mm	1/2"	02
BBV02	20mm	3/4"	02
BBV03	25mm	1"	02
BBV04	32mm	1.1/4"	02
BBV05	40mm	1.1/2"	02
BBV06	50mm	2"	02



**Std Pkg** **BTB28**  
20 Angle Cock Turbo



Swing Check Valve NRV

Code	Size mm	Size Inch	Std Pkg
BSC10	15mm	1/2"	10
BSC11	20mm	3/4"	8
BSC12	25mm	1"	6
BSC13	32mm	1.1/4"	02
BSC14	40mm	1.1/2"	02
BSC15	50mm	2"	02



Foot Valve PVC Jali

Code	Size mm	Size Inch	Std Pkg
SKI01	25mm	1"	01
SKI02	32mm	1.1/4"	01
SKI03	40mm	1.1/2"	01
SKI04	50mm	2"	01



Water Meter Coupling

Code	Size mm	Size	Std Pkg
SKI06	70mm	Long	01
SKI05	50mm	Short	02

## NOTES

### SHORT FORMS/ABBREVIATIONS

STD PKG : Standard Packing

MRP : Maximum Retail Price

CP : Chrome Plating

SS : Stainless Steel

PC : Piece



## NOTES

### SHORT FORMS/ABBREVIATIONS


STD PKG : Standard Packing

MRP : Maximum Retail Price

CP : Chrome Plating

SS : Stainless Steel

PC : Piece

Warranty Description: Warranty against failure arising through faulty designs material or workmanship as mentioned below from the date of purchase, subject to certain terms and conditions specified in warranty manual				
Brand	Collection	Warranty Information	Warranty Period	
			Residential	Commercial
Junior	Florentine	Replacement Warranty is only covered for manufacturing defects and breakage during transit or installation. Any Physical/Chemical Damage is not covered under warranty after installation.	7 Year(s)	1 Year(s)
	Ornamix		7 Year(s)	1 Year(s)
	Mini Florentine		7 Year(s)	1 Year(s)
	Project	Rubber, plastic A.B.S. items / parts are not warranted against breakages or wear & tear.	7 Year(s)	1 Year(s)
	Conti Heavy		7 Year(s)	1 Year(s)
	Croma		7 Year(s)	1 Year(s)
	Oppo	*The spindle is eligible for a one-time replacement only within six (6) months from date of purchase. Any subsequent replacements required for the spindle shall be chargeable and will be borne by the customer.	7 Year(s)	1 Year(s)
	Continental		7 Year(s)	1 Year(s)
	Diamond		7 Year(s)	1 Year(s)
	Visa		7 Year(s)	1 Year(s)
Laxmi	Punch	Replacement Warranty is only covered for manufacturing defects and breakage during transit or installation. *The spindle is eligible for a one-time replacement only within six (6) months from date of purchase. Any subsequent replacements required for the spindle shall be chargeable and will be borne by the customer.	No Warranty	No Warranty
Everwin	Duero	We provide a warranty for S.S.304 Materials (Subject to our Standard Terms and Conditions). Please note that we are not responsible for any rust caused by chemicals or any similar means. <b>Standard Terms and Conditions:</b> - Ensure All Screws are securely fitted for optimal performance and longevity. - For fitting adjustment, use a plastic hammer instead of iron for gentle and precise care, avoiding scratches or damage to accessories. - To maintain the shine of your accessory or accessories for a long time, start by wetting it with plain water, then wipe it clean with a soft clothe. - Avoid using acidic or any other harsh materials when cleaning your accessories.	2 Year(s)	1 Year(s)
	Genil		2 Year(s)	1 Year(s)
	Len		2 Year(s)	1 Year(s)
	Jucar		2 Year(s)	1 Year(s)
	Tajo		2 Year(s)	1 Year(s)
Water Science	Shower & Tap Filter	Scan the QR code for full details on our brand warranty coverage. Email: care@waterscience.in Toll Free number: 1800-121-0599		
Kohinoor Korum	Allied	Replacement Warranty is only covered for manufacturing defects and breakage during transit or installation. Any Physical/Chemical Damage is not covered under warranty after installation. All Products except Angle Cock & Health Faucets are covered under general warranty	3 Year(s)	1 Year(s)
Polo Flex	Unbreakable	Replacement Warranty is only covered for manufacturing defects and breakage during transit only. No Cover for physical damage during installation.	No Warranty	No Warranty
Hy-flow	Acrylic	Replacement Warranty is only covered for manufacturing defects and breakage during transit only. No Cover for physical damage during installation.	No Warranty	No Warranty
Bobby	Allied	Replacement Warranty is only covered for manufacturing defects and breakage during transit or installation. Any Physical/Chemical Damage is not covered under warranty after installation.	No Warranty	No Warranty
SKI	Foot Valve & Meter Coupling	Replacement Warranty is only covered for manufacturing defects and breakage during transit or installation. Any Physical/Chemical Damage is not covered under warranty after installation.	1 Year(s)	1 Year(s)

\*T&amp;C Apply

"The Company", as referred to in this document, includes all the aforementioned company(ies), brand(s), or entities listed in this catalogue.

- The warranty is applicable from the date of purchase.
- The customer must produce the GST paid invoice in original to avail warranty service. In case the purchase has been done by the developer of the apartment, the possession letter from the developer will be treated as equivalent to bill.
- Warranty can be availed at Retailer from where purchase has been made or brand(s) service outlets.
- The Company reserves the right to examine product in question, and its installation, prior to replacement and will replace free of charge any part that proves defective in material and manufacturing workmanship under normal installation, use and service.
- The warranty becomes null and void if installation is not done by qualified and experienced technician/plumber and/or as per the installation procedure laid down by the company.
- The Company are also not liable to pay for any civil or construction work required during installation of new products or replacement/repair of old products.
- An equivalent replacement at pro-rata basis shall be provided in case the product has been discontinued, where in the customer has to pay proportionate amount on the current MRP, given the product is within the aforementioned warranty terms.
- During the warranty period and under normal use, if the product/component/part is found to be of faulty due to manufacturing defect, the same will be repaired or replaced upon production of this GST bill, without charges either for part or the product, the decision of company official will be final for fault qualifies for warranty.
- Warranty remains applicable only if the products have at all times been used strictly in accordance with the terms of this warranty and has not been improperly or negligently handled and is not maintained in accordance to maintenance guidelines given.
- In the event of non-availability of components or parts due to any reason whatsoever The Company or its Authorized Service Centre or the Dealer will not be responsible or liable for any delay that may be caused to service/repair of the Products; no claims financial or otherwise will be entertained.
- The Company and customer(s) agree that company will not be liable for any damages whatsoever arising out of use or inability to use the Companies' Products. The companies bears no responsibility for incidental or consequential damages arising out of use or inability to use the Product(s).
- By purchasing this product, customer agrees to the aforementioned company's aforesaid warranty on the product.
- The Company neither assumes nor authorizes any person to assume for us any other obligation or liability in connection with sale of this product.
- Customer and Company agree that customer's sole remedy for any defects in goods hereunder shall be limited to the repair or replacement at the Company's option within warranty period after delivery of such goods to the first purchaser, of any defective goods, of which notice of defects is given by the customer to the company in accordance with terms of this warranty certificate.
- The part/product against replaced part/product will be property of the Company. The Company shall not be liable to Customer claiming the warranty under the terms of condition of this Limited Warranty Certificate, due to defects caused by rodents/pets or in the events of force majeure. The Force Majeure means any disaster, act of God or the public enemy, any accident, explosion, fire, storm, earthquake, electric storms, tornado, flood, casualty, lockout, strike, labour conditions, unavoidable accident, nuclear explosion, national calamity, or any other circumstance or event or by any enactment of law, or by order of any legally constituted authority, or by any other similar cause of the Company or beyond the reasonable control of the party relying upon such circumstance or event.
- The Company and customer agree that the Company bears no responsibility for incidental and / or consequential damage arising out of use and for inability to use a product. The Company liability will be limited and restricted to the product replacement/value of the product sold. Company under all circumstances shall not be liable to uninstall the defective product or installed replacement product. In case, replacement is the only option then the customer has to hand over the defective product with authorised replacement paper issued by company official. To the seller and take the replacement product from there.
- Product design improvement is a continuation process and it is possible to change in part/design/aesthetics/dimension hence it is advised to check the product for plumbing, company is not responsible for any consequential expense/losses.
- Any dispute arising from this warranty shall be resolved amicably through mutual discussion; failing which, it shall be subject to the jurisdiction of the respective courts of the parties involved.

\*T&C Apply

The warranty shall not be applicable in the following cases:

- Any defect or damage caused to the product due to natural wear and tear.
- The product is not installed and maintained according to the instruction given in Maintenance Booklet or in the Instruction Manual.
- Any repair work is carried out by the persons other than authorised service personal
- If the product is taken out of India.
- Any Modification/Alteration in the original unit or component will lead to void the warranty.
- This warranty will continue to be in force for the terms specified above irrespective of what replacements under it and such replacements shall not attract any fresh period of warranty beyond the period specified above.
- The product is not installed and maintained according to the instruction given in Maintenance Guidelines or in the instruction book.
- If cleaning agent is used on products for more than specified period it can damage the sheen/shine of the product.

# TERMS AND CONDITIONS

Last Updated: [24/07/2025]

These Terms and Conditions ("Terms") govern the business relationship between BathMart ("we", "us", or "our") and the business client ("Client", "you", or "your"). By engaging with our services or purchasing our products, you accept these Terms in full.

## 1. Business Relationship

BathMart operates on a business-to-business (B2B) model only. Our products and services are intended exclusively for use by companies, organizations, or professionals and not for personal consumer use.

## 2. Quotations and Orders

All quotations are valid for 30 days unless otherwise specified.

Orders must be confirmed in writing and are subject to acceptance by BathMart.

Prices and availability are subject to change without prior notice.

All orders are subject to the Standard Packaging (Std. Pkg.) as indicated in this catalogue. The Company does not accept orders in loose or non-standard quantities.

No verbal commitments shall be binding unless documented in writing.

## 3. Payment Terms

Invoices must be settled within 60 days from the date of issuance.

In case of new partners the first three (3) transactions should be cash-n-carry.

Post first three transactions, the credit limit will be provided through the sole discretion of the firm.

Credit limits may be revised at the Company's discretion in the event of a referral from a trusted partner, subject to situational assessment.

Late payments may result in suspension of services and a late fee of 2% per month or maximum allowed under applicable law.

All payments must be made in INR via approved methods.

## 4. Delivery and Performance

Delivery timelines are indicative and subject to availability, logistical factors, and third-party delays.

Title to goods passes upon full payment. Risk of loss passes upon dispatch or as agreed in writing.

## 5. Returns and Cancellations

Returns will only be accepted in cases of defect, damage during transit, or incorrect delivery, and must be reported within 24 hrs of receipt.

Order cancellations after confirmation may incur administrative or handling fees.

## 6. Warranties

We warrant that our products/services conform to the specifications outlined in the agreement or order form.

We disclaim all other warranties to the extent permitted by law, including merchantability or fitness for a specific purpose.

## 7. Client Responsibilities

The Client shall provide timely access, data, and approvals needed to perform the services.

Any delays or issues arising due to incomplete information or cooperation from the Client's side may affect timelines and costs.

### 8. Confidentiality

Both parties agree not to disclose any confidential or proprietary information to any third party without prior written consent. This obligation survives termination of the agreement.

## 9. Limitation of Liability

BathMart shall not be liable for any indirect, special, incidental, or consequential damages.

Our total liability for any claim shall not exceed the value of the order or service that gave rise to the claim.

## 10. Force Majeure

BathMart shall not be held liable for failure to perform due to unforeseen events such as natural disasters, strikes, cyberattacks, pandemics, or regulatory changes beyond its control.

## 11. Intellectual Property

All intellectual property, branding, content, or technology provided by BathMart remains its exclusive property unless otherwise stated in writing. Unauthorized use, copying, or distribution is strictly prohibited.

## 12. Termination

Either party may terminate the engagement with 15 days written notice, unless otherwise stated in a contract.

Upon termination, all dues become immediately payable.

## 13. Dispute Resolution and Jurisdiction

This Agreement is governed by the laws of Karnataka, India.

All disputes shall be resolved through negotiation, failing which they shall be subject to the courts of Bengaluru.

## 14. Amendments

BathMart reserves the right to update or modify these Terms at any time. Continued business engagement implies acceptance of the updated Terms.

**Disclaimer** \*the Company Reserves the Right to modify suspend or discontinue products described in this catalogue at any time, for any reason, and without prior notice.





Scan to See  
Contact Details



1772, 1<sup>st</sup> Cross, 5<sup>th</sup> Main, 2<sup>nd</sup> Block JP Nagar, 8<sup>th</sup> Phase, Bengaluru - 560083

[www.bathmart.in](http://www.bathmart.in)